

Application for a Modification Order

Wildlife and Countryside Act 1981

The Wildlife and Countryside (Definitive Maps and Statements)
Regulations, 1983 (Schedule 7)

**The Definitive Map and Statement of Public Rights of Way for the County of Cumbria,
Parish of Dufton**

To: Cumbria County Council
Of: Countryside Access, Cumbria County Council, The Parkhouse Building, Kingmoor Business Park,
Carlisle, CA6 4SJ

Re: Moor House Birkdale Drive Road, Dufton Parish, Cumbria

By: Barbara Herd, for and on behalf of The British Horse Society
Of: Access and Rights of Way Department, The British Horse Society, Abbey Park, Stareton, Kenilworth,
Warwickshire, CV8 2XZ

Hereby apply for an order under section 53(2) of the Wildlife and Countryside Act 1981 modifying the
Definitive Map and statements for the area by:

1: Adding
A: Bridleway
Starting at: GR NY 757335 Ending at: GR NY 804279

As shown on the plan attached (must be of a scale of at least 1:25,000 and sufficient to determine
the way on the ground)

I/we attach copies of the following documentary evidence (including user evidence forms) in
support of this application: OS 1:50,000; OS 1:25,000; Definitive map online Cumbria; Satellite views
side by side with early 6 inch OS; County maps of Westmorland - Morden 1695, Bartholomew 1875-88,
W H Smith map 1889; OS 1 inch Appleby 102 1868; OS 25 inch Westmorland 1861; Book of reference
Dulton 1861; OS 6 inch 1863 Westmorland VI; OS 1 inch sheet 31 1897; OS 6 inch Westmorland VI,NE
1899; OS 6 inch linked maps 1888-1913; OS 1 inch sheet 25 1905; OS 1 inch sheet 14 1907; OS 1 inch
sheet 10 1925; OS 1 inch sheet 13 1925; OS 1 inch sheet 10 1942; OS 1 inch sheet 13 1943; *The Drovers.
Who they were and how they went: an epic of the English Countryside*, KJ Bonser; *The Natural History of Upper
Tensdale*, Durham Wildlife Trust

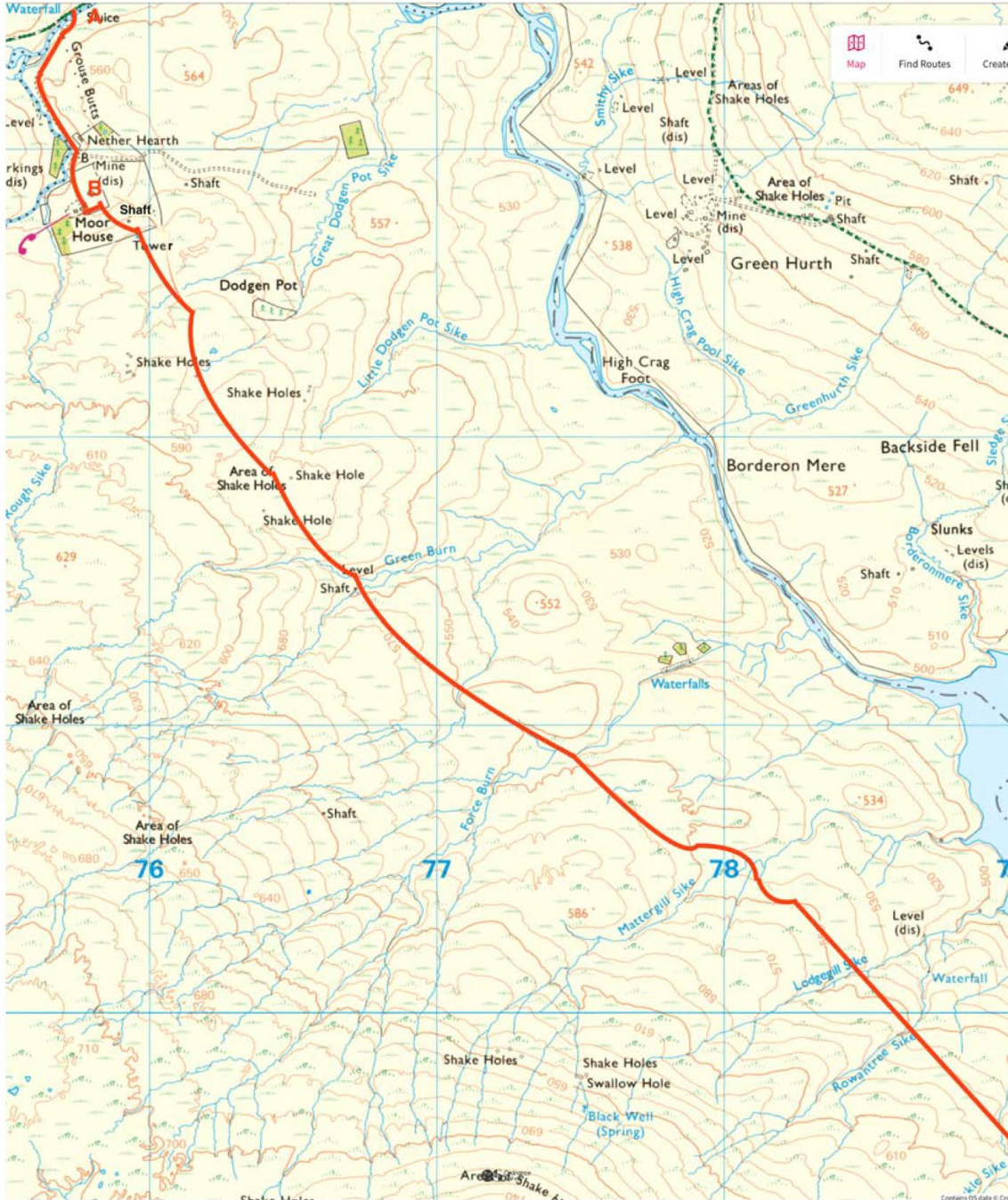
DATED: 8th March 2023

SIGNED 

2a OS 1:25,000

Detail north

The route is shown with the red line. At A it leaves the River Tyne Trail over a bridge



2b OS 1:25,000

Detail south (some overlap)

Again, the route is shown with the red line down to Birkdale, at point C. The gap in the recorded rights of way between C and D is subject to a separate application

